

# 08038PB (3115PS)

# 80<sup>□</sup>X38<sup>L</sup>

## AC Axial Fan



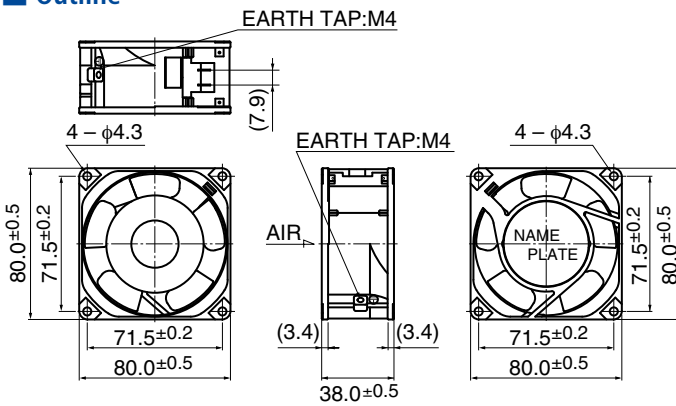
### General Specifications

Motor Structure	Shaded Pole Induction Motor
Motor Protection	Impedance Protection
Insulation Resistance	Min 100MΩ by DC 500V Megger
Dielectric Withstand Voltage	: AC1800V 3s
Allowable Ambient Temperature Range	: - 10°C ~ + 70°C (Operating) - 40°C ~ + 70°C (Storage) non-condensing environment

### Expected Life ※ Failure Rate: 10% (L10 Life)

25°C 100,000 (Hours)

### Outline

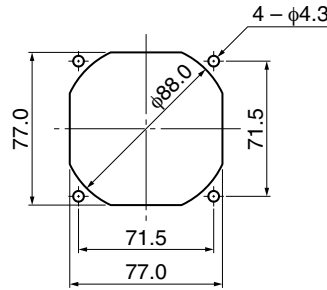


(0.5mm)

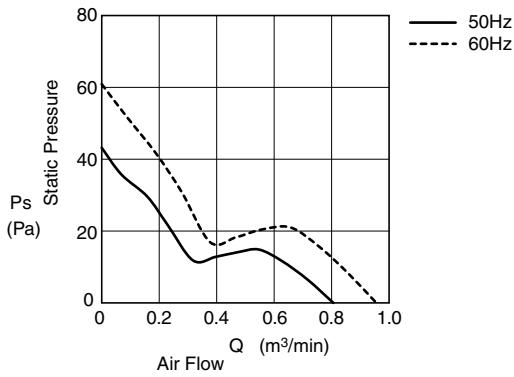
\* Only flange type casing is available.

### Panel Out-cuts

Inlet Side / (Outlet Side)



### Characteristic Curves



### Material

Casing	: Aluminum (Black Painting)
Impeller	: Plastic (Black) UL94V-0
Bearing	: Ball Bearing
Terminal	: Faston #110 or Equiv

Lead Wire type is also available.

Lead Wire : UL3266, AWG22

### Specifications

Model**	Product Number	Rating Voltage (V)	Frequency (Hz)	Starting Voltage (V)	Current (A)*2	Input Power (W)*1	Speed (min-1)*3	Max Air Flow (m³/min)*3	(CFM)*3	Max Static Pressure (Pa)*3	(In H2O)*3	Noise (dB)*1	Mass (g)
08038PB-A0L-EA-	00	100	50	65	0.170	9.0	2700	0.75	26.8	34.4	0.14	33.0	270
			60		0.120	7.0	3200	0.90	32.1	49.1	0.20	38.0	
08038PB-A1J-EA-	00	115	50	75	0.065	4.5	1700	0.50	17.7	16.7	0.067	23.0	
			60		0.060	4.0	1900	0.55	19.4	21.6	0.087	26.0	
08038PB-A1K-EA-	00	115	50	75	0.090	4.5	2100	0.60	21.2	24.6	0.099	29.0	
			60		0.080	4.0	2300	0.68	24.0	29.5	0.120	32.0	
08038PB-A1L-EA-	00	115	50	75	0.140	9.0	2700	0.75	26.8	34.4	0.14	33.0	
			60		0.110	7.0	3200	0.90	32.1	49.1	0.20	38.0	
08038PB-B0L-EA-	00	200	50	130	0.080	9.0	2700	0.75	26.8	34.4	0.14	33.0	
			60		0.060	7.0	3200	0.90	32.1	49.1	0.20	38.0	
08038PB-B2L-EA-	00	220	50	150	0.070	9.0	2700	0.75	26.8	34.4	0.14	33.0	
			60		0.060	7.0	3200	0.90	32.1	49.1	0.20	38.0	
08038PB-B3J-EA-	00	230	50	150	0.055	6.0	1800	0.50	17.7	17.7	0.070	23.0	
			60		0.060	5.0	2100	0.63	22.2	24.6	0.099	26.0	
08038PB-B3K-EA-	00	230	50	150	0.050	7.0	2200	0.63	22.2	24.6	0.099	29.0	
			60		0.045	6.0	2400	0.74	26.1	35.4	0.140	32.0	
08038PB-B3L-EA-	00	230	50	150	0.070	10.0	2700	0.75	26.8	34.4	0.14	33.0	
			60		0.055	8.0	3200	0.90	32.1	49.1	0.20	38.0	
08038PB-B4L-EA-	00	240	50	150	0.075	12.0	2700	0.75	26.8	34.4	0.14	33.0	
			60		0.060	9.0	3200	0.90	32.1	49.1	0.20	38.0	

Rotation: Counterclockwise as seen from the label side  
Airflow Outlet: Label side

Terminal (-EA-) and lead wire (-AA-) is available

\*1: Average Values in Free Air  
\*2: Maximum Values in Free Air  
\*3: Minimum Values in Free Air